

# Network Analysis of Green Technology Transfer between International Construction Firms

Análisis de redes para la transferencia de tecnologías sostenibles entre firmas de construcción internacional

Rolando-Arturo Cubillos-González

Universidad Católica de Colombia. Bogotá (Colombia)

Facultad de Diseño, Programa de Arquitectura

Centro de investigaciones CIFAR

Cubillos-González, R. A. (2019). Network Analysis of Green Technology Transfer between International Construction Firms. *Revista de Arquitectura (Bogotá)*, 22(1), 175-186. <https://doi.org/10.14718/RevArq.2020.2562>

[dx.doi.org/10.14718/RevArq.2020.2562](https://doi.org/10.14718/RevArq.2020.2562)



Arquitecto, Universidad Nacional de Colombia, Bogotá (Colombia).

Magíster en hábitat, Universidad Nacional de Colombia, Bogotá (Colombia).

Candidato a doctor del programa de Doctorado en Gestión de Tecnología y la Innovación, Universidad Pontificia Bolivariana, Medellín (Colombia).

[https://scholar.google.es/citations?user=77ye\\_gwAAAAJ&hl=es&oi=ao](https://scholar.google.es/citations?user=77ye_gwAAAAJ&hl=es&oi=ao)

<https://orcid.org/0000-0002-9019-961X>  
racubillos@ucatolica.edu.co

## Abstract

The green technology transfer is complex for construction firms. A solution is to analyze it as a social network since, if the different relationships between the actors in the construction sector can be identified, it would be possible to assess the technology adaptation capacity of these actors. The aim was to test the transfer of green technology between international construction companies that are engaged in building social or accessible housing. To this end, two countries with the capacity to transfer green technology (United Kingdom and the United States) and two countries with less technological capacity and with the potential to adjust to these technologies (Brazil and Colombia) were identified. Subsequently, five construction firms were selected in each country with which a network analysis was carried out (degree, intensity, proximity, and density) and then simulation was performed. As a result, the technological transfer capacity of Latin American companies to accept and adapt technologies from companies in industrialized countries was identified. It is expected to be able to develop measurement indicators for the technology transfer process that allow a better understanding of the complexity of social housing.

**Keywords:** technological adaptation; green buildings; construction industry; construction field; technology transfer; affordable housing; social housing.

## Resumen

La transferencia de tecnología sostenible es compleja para las firmas de construcción. Una posible solución es analizar esa clase de transferencia como una red social ya que, si se identifican las diferentes relaciones entre los actores del sector de la construcción, es posible evaluar la capacidad de adaptación tecnológica de dichos actores. El objetivo fue evaluar la transferencia de tecnología sostenible entre empresas constructoras internacionales que se dedican a construir vivienda social o accesible. Para esto, se identificaron dos países con capacidad de transferencia de tecnología sostenible (Reino Unido y Estados Unidos) y dos países de menor capacidad tecnológica y con potencial de adaptarse a dichas tecnologías (Brasil y Colombia); posteriormente, se seleccionaron cinco firmas constructoras por cada país, con las cuales se hizo un análisis de redes (brasilbrgrado, intensidad, cercanía y densidad), y luego, procesos de simulación. Como resultado se identificó la capacidad de transferencia tecnológica que tienen las empresas latinoamericanas para aceptar y adaptar tecnologías de empresas de países industrializados, y se espera poder desarrollar indicadores de medición de transferencia tecnológica que permitan comprender mejor la complejidad de la vivienda social.

**Palabras clave:** adaptación tecnológica; edificaciones sostenibles; industria de la construcción; sector de la construcción; transferencia tecnología; vivienda accesible; vivienda social.

Received: January 3 / 2019

Evaluated: July 9 / 2019

Accepted: November 4 / 2019

## Introduction

This article is part of the Research Project *Clean Technologies-Phase 2: The Impact of transferring Clean Technologies on Social Housing in Brazil and Colombia*, from the research line in Technology, Environment, and Sustainability. The Universidad Católica de Colombia funded this research.

For construction firms, transferring green technologies is complex and depends on the relationship between different variables involved. As an example of the above, the choice of materials with high built-in energy content implies a high initial level of energy consumption at the buildings' production stage but also determines future energy consumption to meet the demands of heating, ventilation and air conditioning (Zabalza, Valero & Aranda, 2011, pp. 1133-1134).

Also, with a view of the standards of each country, energy consumption in buildings is a key factor in achieving national and international CO<sub>2</sub> emission targets. In this respect, the economic savings for the construction of buildings are limited and challenging to implement (Zucker et al., 2016, pp. 153-154).

Building renovation is a real opportunity to meet the current challenges of primary energy reduction and global warming, but it is not enough in terms of technology and sustainable adaptation of buildings. Likewise, it has been identified that the concept of balance is central to implementing energy-efficiency-oriented technologies; this is true in the development of zero-carbon buildings (Sartori, Napolitano & Voss, 2012, pp. 220-221).

In this regard, for example, the energy needed to maintain optimal indoor environmental conditions is 35% of the total energy consumption in office buildings (Salcido, Abdul & Issa, 2016, p. 1008). In contrast, some studies, such as the one by Pisello et al., (2016, p. 872), assess the impact of natural ventilation while predicting the energy demand of buildings, as they substantially affect the indoor environmental quality and thermal comfort.

Some authors, like Panchal et al. (2016, p. 900), have studied the overall energy efficiency of single generation and multigenerational systems. In that respect, it is noted that the energy efficiency of the multigenerational system is superior to the single generation system. Achieving sustainability objectives in the construction sector involves adopting sustainable business models and energy efficiency measures (Moschetti & Bratteb, 2016, p. 436).

The above leads to identifying research gaps in the area. In response to growing concerns about climate change and the environment, green building design is increasingly demanded from users. However, rapid evaluation of various design options requires the application of analysis tools such as energy modelling, in addition to natural light and ventilation simulations (Niknam & Karshenas, 2015, p. 910).

According to the authors reviewed, energy analysis requires collecting energy-related information from different sources and introducing it into an energy analysis application, which involves a time-consuming process. This analysis causes delays and increases the time to compare different design alternatives.

Currently, design decisions are mainly reduced to an energy efficiency criterion within the sustainability assessment of buildings (Niknam & Karshenas, 2015, p. 911). Due to the interdependence of criteria, the current approach is applied linearly and does not consider other criteria aimed at seeing the design in a holistic way in order to achieve a better development of buildings.

Therefore, the systemic approach is a better alternative to the energy assessment of buildings. Other proposals are aimed at the economic assessment of green buildings and to promote their development (Liu, Guo & Hu, 2014, p. 37). Such is the case of studies conducted in China that seek the application of energy efficiency technologies in sustainable buildings.

In this sense, decision-making in environmental projects requires consideration of socio-political, environmental and economic impacts, and this is often complicated by the diverse views of the interested parties (Huang, Keisler & Linkov, 2011, p. 3579). According to the authors reviewed, multi-criteria analysis is an appropriate

method to address available technical information and stakeholder values to support decisions in many fields, and may be especially valuable in environmental decision-making.

As an example of this, several green building classification systems have been proposed since the early 1990s (Kim, Oh & Kim, 2013, pp. 203-204). According to the authors, most efforts in this area can be divided into two main parts: 1) development of green building rating systems by identifying relevant rating criteria; 2) evaluation of the validity of building rating systems. Studies on the qualification criteria for green buildings have focused on the development of Energy Efficiency assessment items.

Another example in this topic is the city of Loviisa, in Finland, which is planning a new sustainable residential area with 240,000 m<sup>2</sup> of residential housing. The city wants to promote green energy solutions in the area, considering various forms of renewable energy for heating (Kontu et al., 2015, pp. 169-170).

The results of the studies carried out in this regard, show that district heating produced by biomass-based cogeneration is the most acceptable heating alternative, followed by the heat pump from the land source, either with or without preference information.

Finally, from this bibliographic review, it can be seen that it is of vital importance to introduce the technology adaptability assessment in the construction field with a network vision, since that implies having a systematized overview of the construction process and orienting it more towards reducing environmental impact and improving its energy performance. However, this process requires the application of such vision to be functional so that the construction sector can understand and incorporate these concepts into their daily practices.

According to the reasons explained above, incorporating methodologies oriented to multi-purpose responses can be a contribution to the building construction processes. Therefore, one possibility to understand such a problem is to consider this complex behaviour as a social network, because, in this way, it is possible to study the technology transfer capacity in the construction field using tools for optimal decision-making.

According to some authors on the subject, a social network analysis can be used as a useful



Este artículo está disponible en español en la página web de la *Revista de Arquitectura (Bogotá)*  
<https://doi.org/10.14718/RevArq.2020.2562>

Análisis de redes para la transferencia de tecnologías sostenibles entre firmas de construcción internacionales



diagnostic tool to make explicit a hidden flow of valuable information in the construction sector (Alarcón, Alarcón & Alarcón, 2013, p. 948). For example, this method has been used to examine how the potential for interference between specialized trades is related to the reliability of the work plan in construction firms (Abbasian-Hosseini, Liu & Hsiang, 2015, p. 145).

Other studies have focused on analysing, through networks, the relationship between the performance of the project and the organizational characteristics of the construction firms (Castillo, Alarcón & Pellicer, 2018). Also, network analysis has been used to examine cases of collaboration between Korean construction firms involved in international projects over the past decade (Park & Han, 2012, pp. 1460-1461).

Likewise, some studies have used this method to assimilate the relationship between the State and the construction sector in implementing public policies in Brazil (Marques, Bissoli-Dalvi & Alvarez, 2018, p. 187). However, according to the literature review, no research related to network analysis and the study of technology transfer applied to the construction firms has been found, which shows a gap in the knowledge required on this subject.

This article aimed to evaluate the transfer of green technologies between international construction firms that are engaged in building *social housing* - in the case of Latin America, - or *affordable housing* -, in the case of Europe and the United States. Network analysis and simulation were the methods used in this study.

The result was a simulation based on network analysis regarding the capacity of the internationally selected construction firms to make different transfers of green technologies between them. By means of this exercise, it is expected to develop indicators for the measurement of the technology transfer process in the construction field in the future that will allow a better understanding of the complexity of this process in the area of social housing. The article structure is as follows: first, the methodology developed and the activities carried out to achieve the proposed objectives are explained. Second, the study results are described. Finally, the conclusions of the article are set out.

## Method

The present study seeks to confirm the following hypothesis: *If the different relationships between the actors in the construction sector having the capacity to transfer technology for the development of social or accessible housing on an international scale are identified, then it is*

*possible to assess the technological adaptation capacity of these actors.*

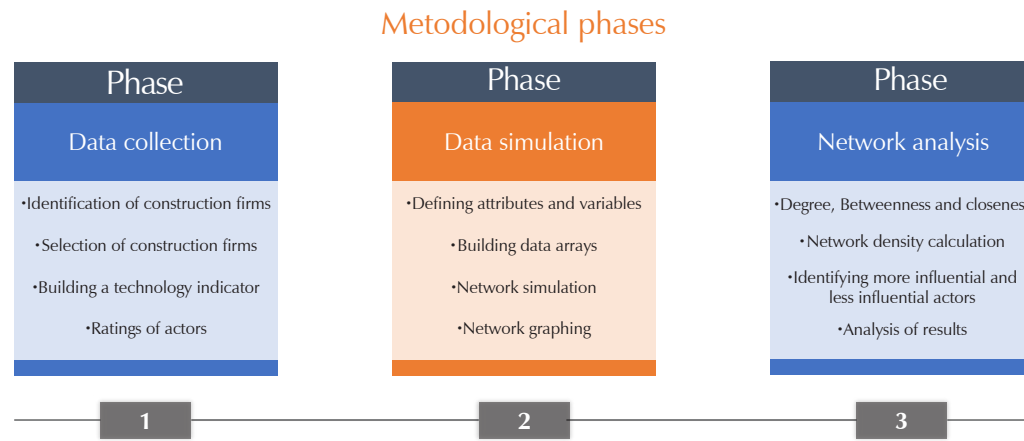
For the design of the network, a type of exchange network was defined, in order to analyze the technology transfer capacity of the different construction firms. At a macro-level, the relationships of the network structure was identified. At a micro-level, the changes that took place in technology when it was transferred by a construction firm were specified. The study comprised three research phases organized as shown in Figure 1.

- **Data collection.** At this stage, the following activities were carried out: first, two countries with the highest technology capacity were identified: the United Kingdom and the United States. Then, two countries with lower technological capacity were identified: Brazil and Colombia (McKinsey Global Institute, 2017, p. 13). Subsequently, 20 construction firms were selected: five for each country (See Figure 2). For the selection of each construction firm, its technological capacity was identified and it was examined whether those firms developed social housing or general housing projects. Also, the construction firms were identified from the rankings of the best construction firms compiled by the governmental agencies of the countries under study.
- **Data simulation.** This point defined attributes and variables for data simulation. Then, a data array, named RED-0 was constructed, which represents an initial time T0. Three matrix simulations were then performed, called RED-1, RED-2, and RED-3, each, with times T1, T2 and T3. Finally, all four networks were graphed.
- **Network analysis:** For network analysis, a calculation was made of the degree, the intensity and the closeness of the network, and also of its overall density. Later, the most and least influential construction firms in each simulation were identified. With these measurements it was possible to identify and determine the transfer capacity of green technologies of construction firms from countries with high technological competence and the construction firms with the lowest competence in this area. Finally, an analysis of results was performed.

This study focused its analysis on building relationships and characteristics between the dependent factor called *actors with technological transfer capacity* and the so-called *independent factors*, namely: the environmental impact, the energy efficiency of the building and the Technology Identification Code. An indicator was designed to establish the relationship and effect of each of the factors involved in the technology transfer of a construction firm. Each variable was defined as follows:

Figure 1. Methodological phases of the study.

Source: author's elaboration (2019).



Selección de firmas constructoras internacionalmente

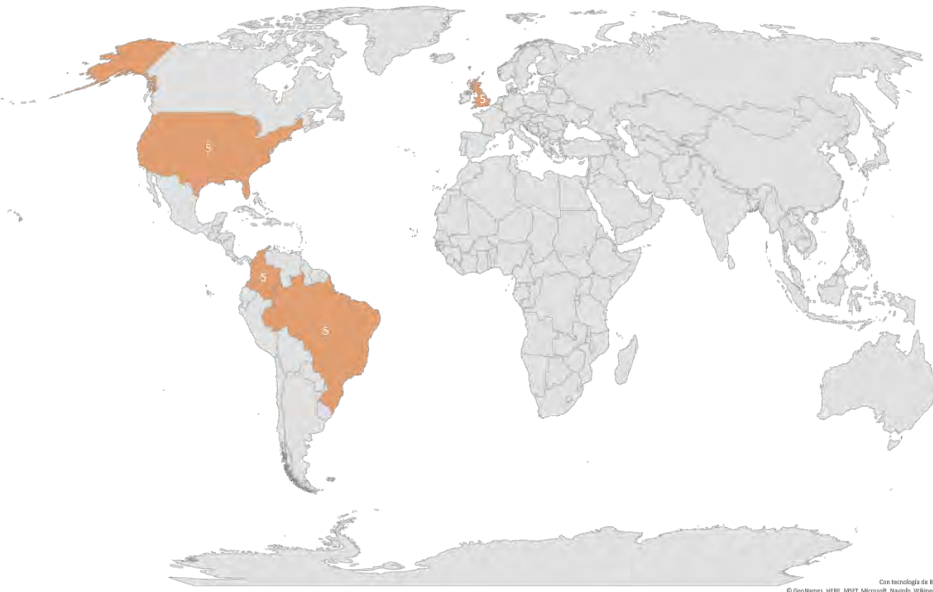


Figure 2. Selection of construction firms internationally

Source: author's elaboration (2019).

- **Actors with technology transfer capacity.** These are the actors with the capacity to transfer technology in order to make it more efficient under the conditions of a given context and environment. In the particular case of construction firms, this variable refers to technologies oriented to renewable energies over conventional ones. For example, some low-cost passive and active energy-saving technologies have been used successfully by construction firms in an energy-saving technology transformation of office production in Tianjin. The results show that energy consumption and maintenance account for most of the life cycle cost (Ma et al., 2016, pp. 810-811). Another example is the flexibility of the electricity system by leveraging renewable energy generation capabilities in buildings, which is of great importance for sustainable development. Control systems to implement such demand response measures need to quantify the flexibility of the respective buildings (Lopes et al., 2016, p. 1053).
- **Environmental impact.** It is the effect caused by man's activities on the environment. With construction firms, this definition refers to the

energy consumption of materials and construction processes. In this respect, the literature review found that, for example, the Dutch National Building Code proposes an easily applicable method that allows for optimised building design concerning environmental impacts (Alsema et al., 2016, pp. 519-522). The proposed approach is a comprehensive construction performance assessment of energy and material demand over the life cycle of the building. Therefore, extending this approach to other countries for assessing construction processes seems like a logical step, as it gives designers a better view of the overall building performance. On the other hand, the adaptation of existing buildings offers important opportunities to improve the comfort and well-being of the occupants, and this is being considered as one of the main approaches to achieving sustainability in the built environment at a relatively low cost and with high absorption rates (Asadi et al., 2014, pp. 444-445). In this sense, the reviewed authors propose a multi-target optimisation model that uses a genetic and artificial algorithm neural network to quantitatively evaluate the technological options in a building rehabilitation project.

- **Energy efficiency of the building.** It is the consumption reduction from conventional energies in a building in order to save and make a rational use thereof, in addition to energy consumption in the construction and operation processes. For example, simulation of building performance is frequently used to support building design, renovation and operation (Carlucci et al., 2016, pp. 280-281). However, modellers traditionally describe input technical data accurately, and only have a limited interest in investigating the influence of occupants' behaviour on the energy efficiency of buildings. Other authors emphasise the thermal energy and comfort performance of double-skin facades, which perform better

compared to double or triple-glazed facades (Gelesz & Reith, 2015, pp. 558-559).

From the above definitions the following indicator was established in order to assess the technological adaptation capacity in buildings:

Indicator of Actors with Technology Transfer Capacity (IATTC) = Technological Environmental Impact (TEI) + Energy Efficiency of the Building (EEB) + Technological Identification Code (TIC)

$$(IATTC) = (TEI) + (EEB) + (TIC)$$

Likewise, to perform the network analysis of the technological transfer process of an actor representing a construction firm, the following nodes were established:

- **An actor with the transfer capacity of traditional technologies.** Is the individual representing a construction firm that uses traditional technologies with high environmental impact.
- **An actor with the transfer capacity of thermal insulation technologies.** Is the individual representing a construction firm that uses technologies based on passive strategies.
- **An actor with energy efficiency technology transfer capability.** Is the individual representing a construction firm that uses technologies to reduce energy consumption and combines them with passive strategies.
- **An actor with the transfer capacity of clean technologies.** Is the individual representing a construction firm that uses technologies to

reduce environmental impacts through the analysis of the entire life cycle, both of the resources and processes used in the design, production, and operation of a building.

- **An actor with the ability to transfer climate-sensitive technologies.** Is the individual representing a construction firm that uses computational technologies to identify patterns of climate change behaviour that can be used in the design, construction and operation processes of a building.
- **An actor with the ability to transfer low carbon technologies.** Is the individual representing a construction firm that uses technologies to produce a minimum of greenhouse gases throughout the design, construction and operation of a building.

Therefore, for the development of the experiment, it was established that the universe of the initial network was 20 nodes, which represented the 20 construction firms previously selected (Table 1). Then, the organisation and classification of the construction firms were done randomly. To validate the proposed hypothesis from the designed indicator, a rating of the technologies used by each of the construction firms selected was employed according to the information provided by the databases and the web pages of each firm. The analysis nodes were numbered from 1 to 6, so that they could be identified. Likewise, a parameterisation of the variables was established

Actor	Countries	Construction Firms		Technology
		Social Housing / Affordable Housing	Housing	
A1	UK	X	X	Climate-sensitive technologies
A2	COL	X	X	Traditional technologies
A3	COL	X	X	Thermal insulation technologies
A4	COL	X	X	Traditional technologies
A5	UK	X	X	Climate-sensitive technologies
A6	UK	X	X	Low-carbon technologies
A7	UK	X	X	Energy efficiency technologies
A8	BRA	X	X	Traditional technologies
A9	UK	X	X	Energy efficiency technologies
A10	BRA	X	X	Traditional technologies
A11	USA	X	X	Energy efficiency technologies
A12	COL	X	X	Thermal insulation technologies
A13	BRA	X	X	Thermal insulation technologies
A14	BRA	X	X	Thermal insulation technologies
A15	USA	X	X	Climate-sensitive technologies
A16	USA	X	X	Thermal insulation technologies
A17	COL	X	X	Traditional technologies
A18	BRA	X	X	Traditional technologies
A19	USA	X	X	Climate-sensitive technologies
A20	USA	X	X	Low-carbon technologies

Table 1. Selected construction firms and the identification of the use of green technologies. Source: author's elaboration (2019).

through a score from 1 to 60, organised in 6 deciles for the independent variables (Table 2). It should be noted that the metric designed in that initial state of the work only took into account positive integers.

On the other hand, the relationship between variables was followed by a consistency process in the rating process. For example, the greater the environmental impact (rating 6), the lower the energy efficiency (rating 1). The relationship between these two variables is inversely proportional. As a result, a score was obtained for each actor between 8 and 13 (Table 3), where 8 was the score of the lowest indicator related to the technology with the highest impact and lowest efficiency, compared to 13, which was the score of the highest indicator related to the technology of less impact and greater efficiency.

Next, the simulation was carried out. To that end, four double-entry matrices were made, and the model was ran, which generated four network scenarios, and allowed identifying the different agents and their relationships. In this sense, the identification of each node took place

by establishing that 0 equals no relation, and 1, the number of entries that a specific node has within the proposed universe.

## Results

Finally, the results of the experiment were validated in the UCINET 6.682 program, in which the different networks were plotted, and the cohesion of the environmental impact and energy performance factors was examined against technological transfer, through the analysis of the degree (degree), intermediation (*betweenness*), and proximity (*closeness*). These three units of measurement allowed to identify and assess the capacity level that occurs in the technology transfer of a construction firm (Borgatti, Everett & Johnson, 2013).

Likewise, the density analysis was performed, which identified the number of possible relationships between nodes, and, in turn, visualised the general behaviour that occurs when transferring technology from one construction firm to another. Meanwhile, the study of the degree showed the number of relationships between the

Table 2. Parameterization of variables for indicator construction.

Source: author's elaboration (2019).

Table 3. Parameterization of variables for indicator construction.

Source: author's elaboration (2019).

Technology, Environmental Impact (TEI)	Value	Energy Efficiency of the Building (EEB)	Value	Actors with Technology transfer Capacity (ATTC)	Technology Identification Code (TIC)
0-10	1	0-10	1	Actor with the capacity to transfer traditional technologies	1
11-20	2	11-20	2	Actor with the capacity to transfer thermal insulation technologies	2
21-30	3	21-30	3	Actor with the capacity to transfer energy efficiency technology	3
31-40	4	31-40	4	Actor with the capacity to transfer clean technologies	4
41-50	5	41-50	5	Actor with the ability to transfer climate-sensitive technologies	5
51-60	6	51-60	6	Actor with the ability to transfer low carbon technologies	6

Actors with Technological Transfer Capacity (ATTC)	Technological, Environmental Impact (TEI)	Energy Efficiency of the Building (EEB)	Technological Identification Code (TIC)	Actors with Technological Transfer Capacity (ATTC)
Actor with the capacity to transfer traditional technologies	6	1	1	8
Actor with the capacity to transfer thermal insulation technologies	5	2	2	9
Actor with the capacity to transfer energy efficiency technology	4	3	3	10
Actor with the capacity to transfer clean technologies	3	4	4	11
Actor with the ability to transfer climate-sensitive technologies	2	5	5	12
Actor with the ability to transfer low carbon technologies	1	6	6	13

Actor	Country	TEI	EEB	TIC	IATTC	Degree	Betweenness	Closeness	Technology transfer Capacity (IATTC) = (Degree n.º / Actors)
A1	UK	3	4	4	11	13	1.52	25	65 %
A2	COL	6	1	1	8	15	2.595	23	75 %
A3	COL	5	2	2	9	16	3.085	22	80 %
A4	COL	6	1	1	8	17	2.932	21	85 %
A5	UK	2	5	5	12	13	1.304	25	65 %
A6	UK	1	6	6	13	15	2.113	23	75 %
A7	UK	4	3	3	10	14	1.831	24	70 %
A8	BRA	6	1	1	8	15	2.947	23	75 %
A9	UK	4	3	3	10	13	1.266	25	65 %
A10	BRA	6	1	1	8	19	4.181	19	95 %
A11	USA	4	3	3	10	14	1.936	24	70 %
A12	COL	5	2	2	9	15	2.249	23	75 %
A13	BRA	5	2	2	9	12	1.357	26	60 %
A14	BRA	5	2	2	9	18	3.403	20	90 %
A15	USA	2	5	5	12	13	1.314	25	65 %
A16	USA	5	2	2	9	13	1.314	25	65 %
A17	COL	6	1	1	8	14	1.602	24	70 %
A18	BRA	6	1	1	8	14	1.585	24	70 %
A19	USA	3	4	4	11	16	2.41	22	80 %
A20	USA	1	6	6	13	15	2.056	23	75 %

Table 4. RED-0 Results. Source: author's elaboration (2019).

independent variables, which allow measuring the individual behaviour of each factor against the technology transfer.

### RED-0 Results

The network starts with a T<sub>0</sub> time and with 20 actors, of which it can be seen that the five main firms of the network are all Latin American and start with a high capacity for technology transfer. In this case, there is a high capacity to receive green technologies. It is identified that the construction company A10 represents a Brazilian company with a high technology transfer capacity of 95% and an IATTC of 8; that is, it has traditional technologies. In this particular case, it can be seen that the firm has a high capacity for relationships with other actors in the network, its degree is 19 and it has a high capacity for transmitting and receiving technology. Its betweenness is 4,181. Likewise, its proximity is 19, which allows it to interact with other actors easily since it is located in the centre of the network. Table 4 shows the first five actors of RED-0 and the corresponding results. Figure 3 shows the graphing of RED-0 and figure 4 shows the graphical behaviour of the data in Table 4.

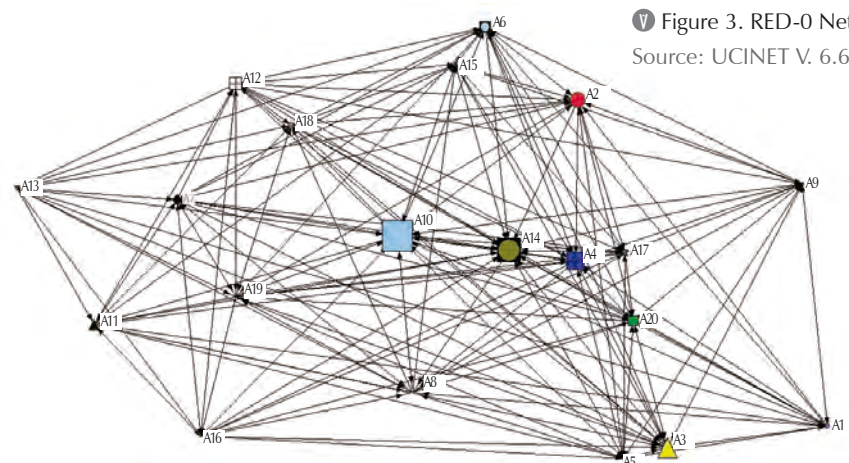


Figure 3. RED-0 Network. Source: UCINET V. 6.682

Actors with Technological Transfer Capacity (ATTC) RED 0 - T0

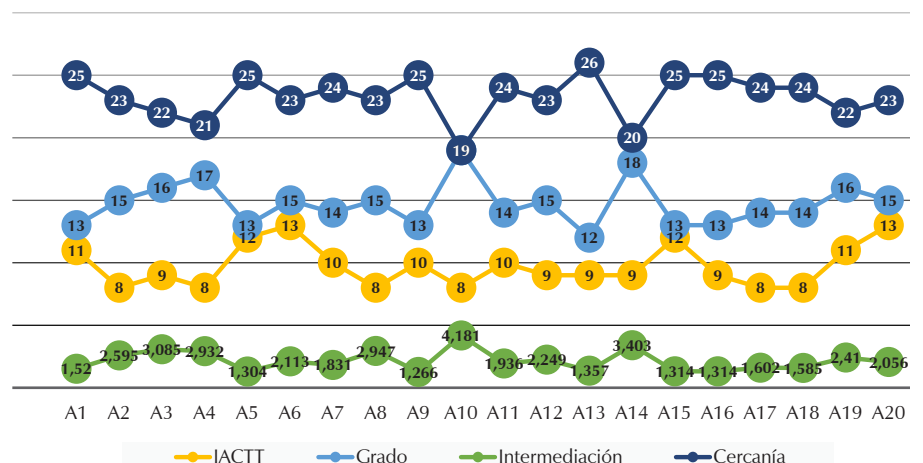


Figure 4. RED-0 Chart. Source: UCINET V. 6.682

Actor	Country	TEI	EEB	TIC	IATTC	Degree	Betweenness	Closeness	Technology transfer Capacity (IATTC) = (Degree n.º / Actors)
A1	UK	1	6	6	13	12	8.776	18	75%
A2	COL	4	3	3	10	8	4.093	22	63%
A3	COL	2	5	5	12	12	13.85	18	75%
A4	COL	3	4	4	11	10	5.367	20	63%
A6	UK	2	5	5	12	7	1.843	23	44%
A7	UK	4	3	3	10	7	2.283	23	44%
A8	BRA	3	4	4	11	10	7.793	20	63%
A10	BRA	2	5	5	12	11	6.817	19	69%
A11	USA	2	5	5	12	4	0.167	26	25%
A12	COL	3	4	4	11	6	0.676	24	38%
A13	BRA	4	3	3	10	3	0.167	27	19%
A14	BRA	3	4	4	11	6	0.476	24	38%
A17	COL	4	3	3	10	4	0.167	26	25%
A18	BRA	3	4	4	11	5	0.367	25	31%
A19	USA	4	3	3	10	7	1.66	23	44%
A20	USA	2	5	5	12	8	5.5	22	50%

Table 5. RED-1 Results.  
Source: author's elaboration (2019).

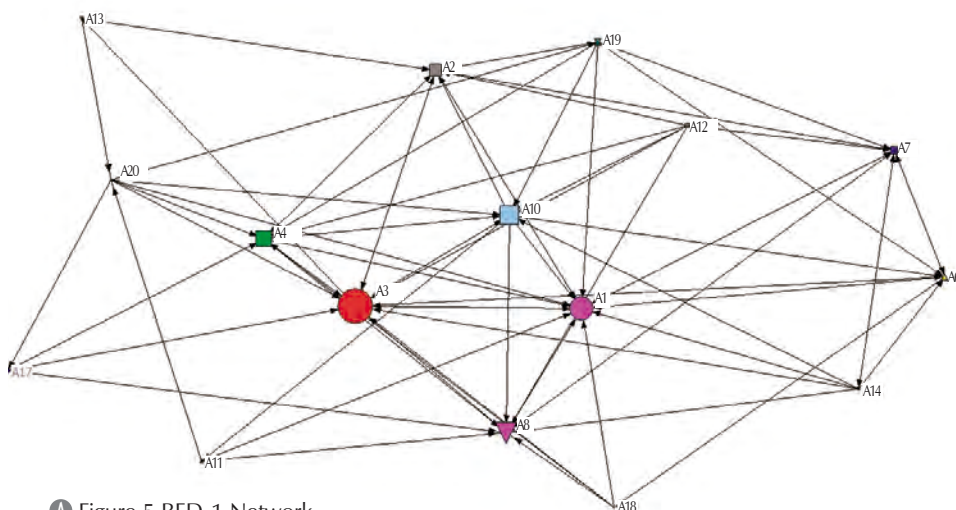


Figure 5 RED-1 Network.  
Source: UCINET V. 6.682

### RED-1 Results

After eliminating the construction firms that have the lowest technology transfer capacities, the network starts with a T1 time and with 16 actors. It is observed that among the five main firms in the network, one is European, one is from the United States and four are Latin American. All of them have a high capacity for technology transfer.

Likewise, from the simulation carried out, it is identified that construction firms have evolved in the use of the type of technology. It can also be seen that there is a construction firm with a high capacity to transfer technologies, and four construction firms with a high capacity to receive such technologies.

Here, the construction firm A1 represents a company in the United Kingdom with a technology transfer capacity of 75% and an IATTC of 13, that is, it has low carbon technologies. Additionally, this firm is on a par with an A3 construction firm that represents a Colombian company with a technology transfer capacity of 75% and an IATTC of 12, according to which it has a climate-sensitive technology.

It is important to note that this firm has evolved in simulating an IATTC of 9 (table 4) to an IATTC of 12 (Table 5), which allows it to have the capacity to accept new technologies. Table 5 shows the first five actors of RED-1 and the corresponding results. Figure 5, meanwhile, shows the graphing of RED-1, and Figure 6 shows the graphical behaviour of the data in Table 5.

Actors with Technological Transfer Capacity (ATTC)  
RED 1 - T1

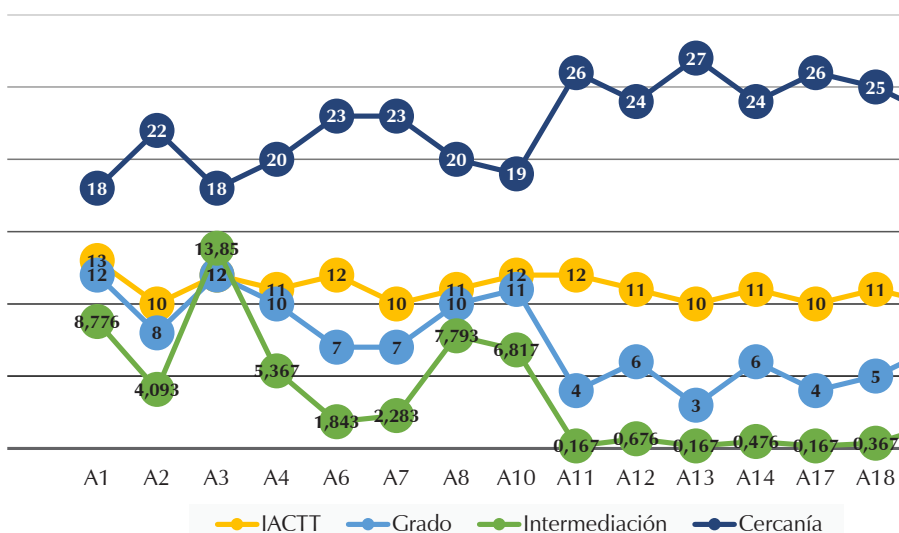


Figure 6. RED-1 Chart.  
Source: UCINET V. 6.682



Actor	Country	TEI	EEB	TIC	IATTC	Degree	Betweenness	Closeness	Technology transfer Capacity (IATTC) = (Degree n.º / Actors)
A1	UK	1	6	6	13	3	0.667	22	25%
A2	COL	1	6	6	13	5	0.583	19	42%
A3	COL	3	4	4	11	7	11.5	15	58%
A4	COL	2	5	5	12	4	1.917	19	33%
A6	UK	4	3	3	10	6	4.917	16	50%
A7	UK	3	4	4	11	3	2.333	21	25%
A8	BRA	2	5	5	12	2	0.000	23	17%
A10	BRA	4	3	3	11	7	6.417	15	58%
A12	COL	4	3	3	10	4	2.167	19	33%
A14	BRA	2	5	5	12	7	4.833	15	58%
A19	USA	4	3	3	10	7	6.583	15	58%
A20	USA	1	6	6	13	3	2.083	21	25%

Table 6. RED-2 results. Source: author's elaboration, 2019.

### RED-2 Results

After a second elimination of the construction firms that have the lowest technology transfer capabilities, the network starts with a T<sub>2</sub> time and with 12 actors. It is observed that the five main firms of the network are: one European, one from the United States and three from Latin America. It can be seen that the five firms have similar technology transfer capabilities.

Likewise, from the simulation carried out, it is identified that the construction firms have continued their evolution in using a different technology. In this network, it can be seen that the construction firm with a high capacity to transfer technologies is the Colombian firm A3, which has a technology transfer capacity of 58% and an IATTC of 11. It is important to note that the firm moves back in technology: it goes from an IATTC of 12 to an IATTC of 11. The firm lost transfer capacity. However, it has a high betweenness of 11.5, which means that the company has a high capacity for transmitting and receiving technology within the network, and this makes it a good intermediary between other actors in the network (figure 7).

Table 6 shows the first five actors of RED-2 and the corresponding results. Figure 7 shows the graphing of RED-1 and figure 8 shows the graphical behaviour of the data in table 6.

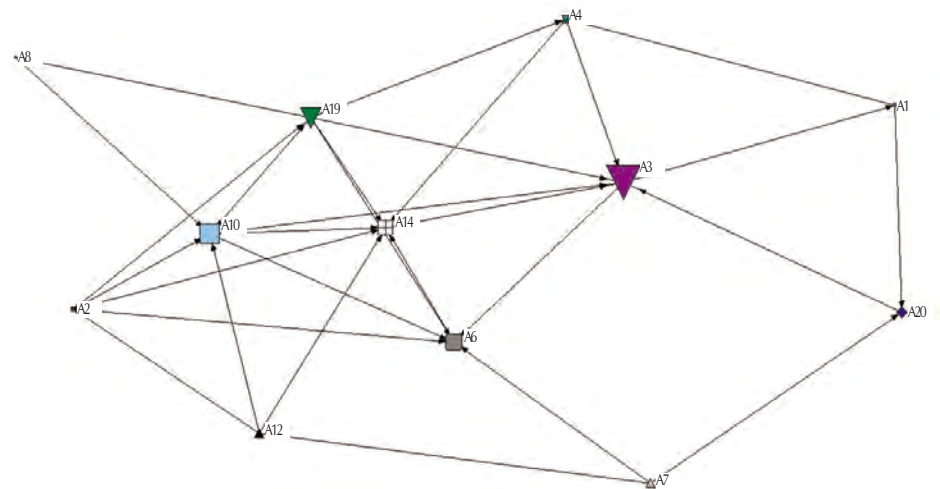


Figure 7. RED-2 Network. Source: UCINET V. 6.682

Actors with Technological Transfer Capacity (ATTC) RED 2 - T2

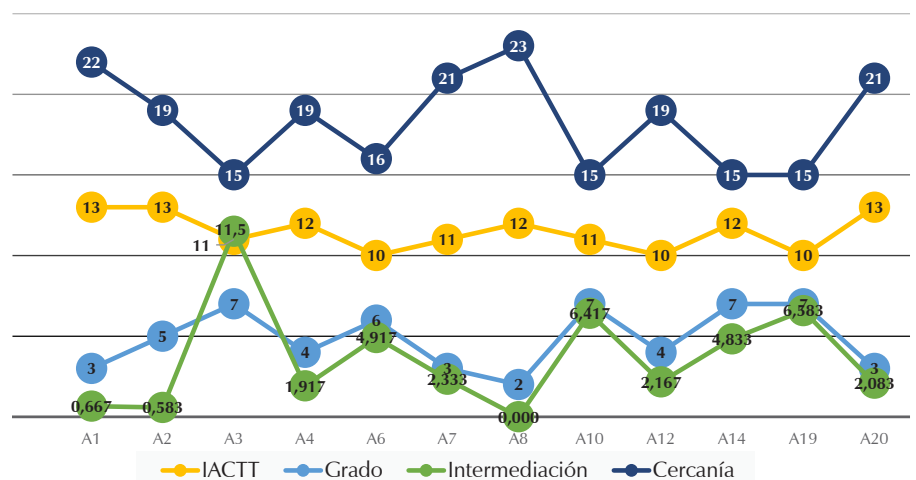


Figure 8 RED-2 Chart. Source: UCINET V. 6.682

Actor	Country	TEI	EEB	TIC	IATTC	Degree	Betweenness	Closeness	Technology transfer Capacity (IATTC) = (Degree n.º / Actors)
A3	COL	1	6	6	13	5	2.583	7	71%
A6	UK	4	3	3	10	3	0.25	9	43%
A7	UK	4	3	3	11	4	1.167	8	57%
A10	BRA	1	6	6	13	5	2.583	7	71%
A12	COL	2	5	5	12	3	0.25	9	43%
A14	BRA	2	5	5	12	4	1.167	8	57%
A19	USA	1	6	6	13	2	0	10	29%

Table 7. RED-3 Results.  
Source: author's elaboration (2019).

Item	Network density	Number of ties	Standard deviation	Average nodal grade	Alpha Index
RED-0	0.534	203	0.499	10.15	0.958
RED-1	0.308	74	0.462	4.625	0.877
RED-2	0.242	32	0.429	2.667	0.793
RED-3	0.405	17	0.491	2.429	0.826

Table 8. Density calculation results networks: RED-0, RED-1, RED-2, and RED-3.

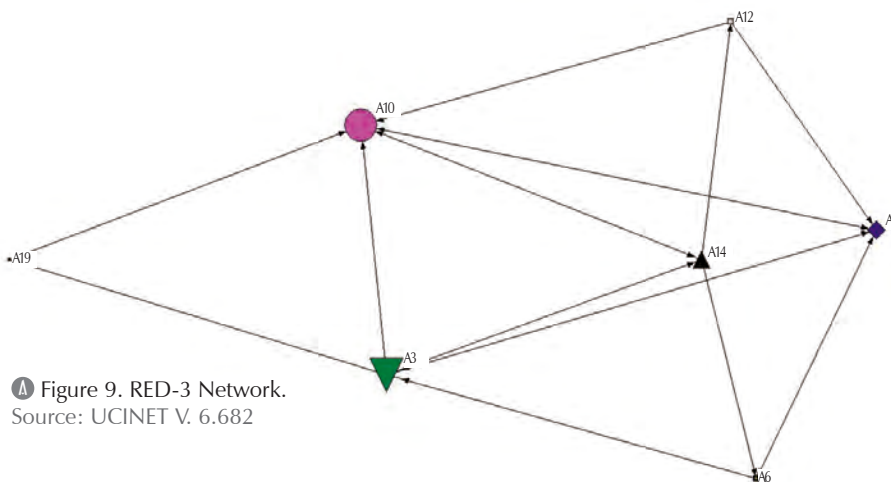


Figure 9. RED-3 Network.  
Source: UCINET V. 6.682

### RED-3 Results

After the third elimination of the construction firms that have the lowest technology transfer capabilities, the network starts with a T<sub>3</sub> time and with 7 actors. It is also observed that the four main firms of the network are one European and three Latin American. It is also observed that the four firms have similar technology transfer capabilities. In this case, the two construction firms are A3 and A10, which have a technology transfer capacity of 71% and an IATTC of 13. Both firms manage to obtain the highest technology in the market. Also, the two firms have a high betweenness of 2,583. That is, the two companies can transmit and receive technology within the network. Finally, table 7 shows the first four actors of RED-3 and the corresponding results can be observed. Figure 9 shows the graphing of RED-3 and figure 10 shows the graphical behaviour of the data in Table 7.

Table 8 shows the density calculation of the four networks analyzed. Density is a measure that calculates the potential relationship between the actors in the network. Therefore, with this measure, the potential of relationships that occur in the four networks and their average grade can be verified. It can be seen that RED-0 starts with a density of 0.534 and ends in RED-3, with a density of 0.405.

According to the above, there is a 24% loss in network density in the entire network simulation and analysis for transferring green technologies in construction firms. In addition, it identifies a high reduction in the number of relationship opportunities between the actors; it reduces the number of ties from 203 in RED-0 to 17 in RED-3 (Table 8).

Actors with Technological Transfer Capacity (ATTC)  
RED 3 - T3

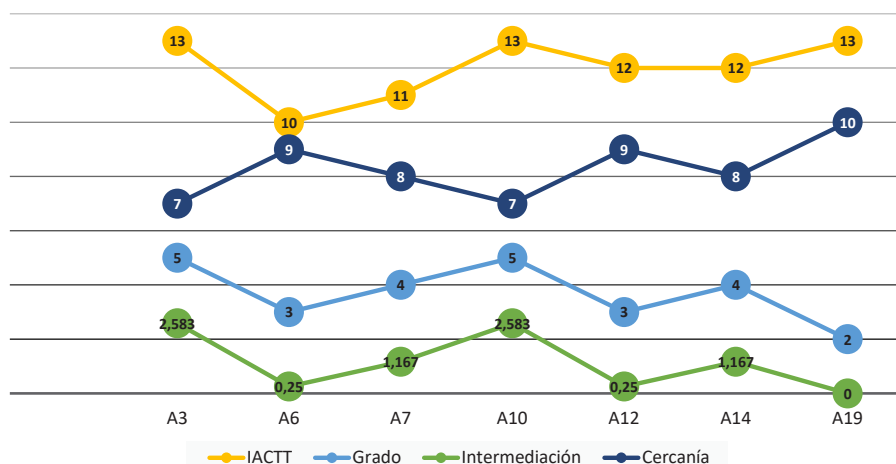


Figure 10. Chart, RED-3.  
Source: UCINET V. 6.682

Construction firms in Brazil and Colombia													
Actor	Country	RED-0 (T0)	RED-1 (T1)	Result of technology transfer capacity		RED-1 (T1)	RED-2 (T2)	Result of technology transfer capacity		RED-2 (T2)	RED-2 (T2)	Result of technology transfer capacity	
		Technology transfer capacity	Technology transfer capacity	Lost	Gain	Technology transfer capacity	Technology transfer capacity	Lost	Gain	Technology transfer capacity	Technology transfer capacity	Lost	Gain
A10	BRA	95%	69%	26%		69%	58%	10%		58%	50%	8%	
A3	COL	80%	75%	5%		75%	58%	17%		58%	58%	0%	
A14	BRA	90%	38%	53%		38%	58%		<b>21%</b>	58%	25%	33%	
A12	COL	75%	38%	38%		38%	33%	4%		33%	25%	8%	
A2	COL	75%	63%	13%		63%	42%	21%		42%	25%	17%	
A4	COL	85%	63%	23%		63%	33%	29%		33%	0%	33%	
A8	BRA	75%	63%	13%		63%	17%	46%		17%	0%	17%	
A18	BRA	70%	31%	39%		31%	0%	31%		0%	0%	0%	
A17	COL	70%	25%	45%		25%	0%	25%		0%	0%	0%	
A13	BRA	60%	19%	41%		19%	0%	19%		0%	0%	0%	

Construction firms in the United Kingdom and the United States													
Actor	Country	RED-0 (T0)	RED-1 (T1)	Result of technology transfer capacity		RED-1 (T1)	RED-2 (T2)	Result of technology transfer capacity		RED-2 (T2)	RED-3 (T3)	Result of technology transfer capacity	
		Technology transfer capacity	Technology transfer capacity	Lost	Gain	Technology transfer capacity	Technology transfer capacity	Lost	Gain	Technology transfer capacity	Technology transfer capacity	Lost	Gain
A6	UK	75%	44%	31%		44%	50%		<b>6%</b>	50%	43%	7%	
A19	USA	80%	44%	36%		44%	58%		<b>15%</b>	58%	29%	30%	
A7	UK	70%	44%	26%		44%	25%	19%		25%	57%		<b>32%</b>
A1	UK	65%	75%		<b>10%</b>	75%	25%	50%		25%	0%	25%	
A20	USA	75%	50%	25%		50%	25%	25%		25%	0%	25%	
A11	USA	70%	25%	45%		25%	0%	25%		0%	0%	0%	
A5	UK	65%	0%	65%		0%	0%	0%		0%	0%	0%	
A9	UK	65%	0%	65%		0%	0%	0%		0%	0%	0%	
A15	USA	65%	0%	65%		0%	0%	0%		0%	0%	0%	
A16	USA	65%	0%	65%		0%	0%	0%		0%	0%	0%	

Finally, Table 9 shows the results of the losses and gains in the technology transfer capacity of the 20 firms analyzed through networks. Of the construction firms in Brazil and Colombia, the A14 actor from Brazil stands out, who presents a 21% gain in his capacity for technology transfer in the transition between RED-1 and RED-2. Meanwhile, actor A6, from the United Kingdom, and A19, from the United States, show a 6% and 15% gain, respectively, in their ability to transfer technology in the transition between RED-1 and RED-2.

On the other hand, actor A7, from the United Kingdom, shows a 32% gain in his ability to transfer

technology in the transition between RED-2 and RED-3. Finally, actor A1 exhibits a 10% gain in his ability to transfer technology.

### Conclusions

This study shows the complexity and the relationship of the variables involved in technology transfer between different international construction firms. The identification of a research gap in this area allowed the evaluation of transferring green technologies between construction companies dedicated to building social housing or accessible housing.

Table 9. Results of the calculation of losses and gains of technology transfer capacity: RED-0, RED-1, RED-2, and RED-3.

Source: author's elaboration (2019).

Therefore, this exercise could develop an indicator of the measurement of green technology transfer between construction firms. In the first place, it is concluded that strengthening technology transfer capabilities allows medium and long-term gains for construction firms.

However, it is observed that there is a 24% loss in network density throughout the process. It is also observed that construction firms in Brazil and Colombia show 21% gains in their capacity for medium-term technology transfers

by meeting stronger international companies and better technologies.

Likewise, it can be seen that some firms may present small technological setbacks while developing the process of strengthening their technology transfer capacity. This exercise shows the adaptability of Latin American construction firms to the transfer capacity of construction firms in industrialized countries. At this point, it can be confirmed that the hypothesis proposed at the beginning of this article is valid.

## References

- Abbasian-Hosseini, S. A., Liu, M., & Hsiang, S. M. (2015). *Social network analysis for construction specialty trade interference and work plan reliability*. Proceedings of IGLC 23 - 23rd Annual Conference of the International Group for Lean Construction: Global Knowledge - Global Solutions, 2015-January (919), 143–152. Recuperated from <http://iglc.net/Papers/Details/1223>
- Alarcón, D. M., Alarcón, I. M., & Alarcón, L. F. (2013). *Social network analysis: A diagnostic tool for information flow in the AEC industry*. 21st Annual Conference of the International Group for Lean Construction 2013, IGLC 2013, 196–205. Recuperated from <http://iglc.net/Papers/Details/864>
- Alsema, E. A., Anink, D., Meijer, A., Straub, A., & Donze, G. (2016). Integration of Energy and Material Performance of Buildings: I=E+M. *Energy Procedia*, 96(October), 517–528. <https://doi.org/10.1016/j.egypro.2016.09.094>
- Asadi, E., Silva, M. G. Da, Antunes, C. H., Dias, L., & Glicksman, L. (2014). Multi-objective optimization for building retrofit: A model using genetic algorithm and artificial neural network and an application. *Energy and Buildings*, 81, 444–456. <https://doi.org/10.1016/j.enbuild.2014.06.009>
- Borgatti, S.P., Everett, M.G., & Johnson, J.C. (2013). *Analyzing Social Networks*. Sage Publications.
- Carlucci, S., Lobaccaro, G., Li, Y., Catto Lucchino, E., & Ramaci, R. (2016). The effect of spatial and temporal randomness of stochastically generated occupancy schedules on the Energy Efficiency of a multiresidential building. *Energy and Buildings*, 127, 279–300. <https://doi.org/10.1016/j.enbuild.2016.05.023>
- Castillo, T., Alarcón, L. F., & Pellicer, E. (2018). Influence of Organizational Characteristics on Construction Project Performance Using Corporate Social Networks. *Journal of Management in Engineering*, 34(4). [https://doi.org/10.1061/\(ASCE\)ME.1943-5479.0000612](https://doi.org/10.1061/(ASCE)ME.1943-5479.0000612)
- Gelesz, A., & Reith, A. (2015). Climate-based performance evaluation of double skin facades by building energy modelling in Central Europe. *Energy Procedia*, 78, 555–560. <https://doi.org/10.1016/j.egypro.2015.11.735>
- Huang, I. B., Keisler, J., & Linkov, I. (2011). Multi-criteria decision analysis in environmental sciences: Ten years of applications and trends. *Science of the Total Environment*, 409(19), 3578–3594. <https://doi.org/10.1016/j.scitotenv.2011.06.022>
- Kim, M. J., Oh, M. W., & Kim, J. T. (2013). A method for evaluating the performance of green buildings with a focus on user experience. *Energy and Buildings*, 66, 203–210. <https://doi.org/10.1016/j.enbuild.2013.07.049>
- Kontu, K., Rinne, S., Olkkonen, V., Lahdelma, R., & Salminen, P. (2015). Multicriteria evaluation of heating choices for a new sustainable residential area. *Energy and Buildings*, 93(x), 169–179. <https://doi.org/10.1016/j.enbuild.2015.02.003>
- Liu, Y., Guo, X., & Hu, F. (2014). Cost-benefit analysis on green building energy efficiency technology application: A case in China. *Energy and Buildings*, 82, 37–46. <https://doi.org/10.1016/j.enbuild.2014.07.008>
- Lopes, R. A., Chambel, A., Neves, J., Aelenei, D., & Martins, J. (2016). A Literature Review of Methodologies Used to Assess the Energy Flexibility of Buildings. *Energy Procedia*, 91, 1053–1058. Doi: <https://doi.org/10.1016/j.egypro.2016.06.274>
- Ma, H., Zhou, W., Lu, X., Ding, Z., & Cao, Y. (2016). Application of Low Cost Active and Passive Energy Saving Technologies in an Ultra-low Energy Consumption Building. *Energy Procedia*, 88, 807–813. <https://doi.org/10.1016/j.egypro.2016.06.132>
- Marques, S. B., Bissoli-Dalvi, M., & Alvarez, C. E. de. (2018). Políticas públicas em prol da sustentabilidade na construção civil em municípios brasileiros. *Urbe. Revista Brasileira de Gestão Urbana*, 10(Suppl. 1), 186–196. Epub July 30, 2018. <https://dx.doi.org/10.1590/2175-3369.010.supl1.a010>
- McKinsey Global Institute. (2017). *Reinventing Construction: A Route to Higher Productivity*. McKinsey & Company, (February), 20. <https://doi.org/10.1080/19320248.2010.527275>
- Moschetti, R., & Brattebø, H. (2016). Sustainable business models for deep energy retrofitting of buildings: state-of-the-art and methodological approach. *Energy Procedia*, 96(1876), 435–445. <https://doi.org/10.1016/j.egypro.2016.09.174>
- Niknam, M., & Karshenas, S. (2015). Sustainable Design of Buildings using Semantic BIM and Semantic Web Services. *Procedia Engineering*, 118, 909–917. Doi:<https://doi.org/10.1016/j.proeng.2015.08.530>
- Panchal, S., Dincer, I., & Agelin-Chaab, M. (2016). Analysis and evaluation of a new renewable energy based integrated system for residential applications. *Energy and Buildings*, 128, 900–910. <https://doi.org/10.1016/j.enbuild.2016.07.038>
- Park, H., & Han, S. H. (2012). Impact of inter-firm collaboration networks in international construction projects: A longitudinal study. In *Construction Research Congress 2012: Construction Challenges in a Flat World* (pp. 1460–1470). Construction Management and Information Laboratory, Dept. of Civil and Environmental Engineering, Yonsei University, Seoul, South Korea. <https://doi.org/10.1061/9780784412329.147>
- Pisello, A. L., Castaldo, V. L., Taylor, J. E., & Cotana, F. (2016). The impact of natural ventilation on building energy requirement at inter-building scale. *Energy and Buildings*, 127, 870–883. <https://doi.org/10.1016/j.enbuild.2016.06.023>
- Salcido, J. C., Abdul, A., & Issa, R. R. A. (2016). From simulation to monitoring: Evaluating the potential of mixed-mode ventilation (MMV) systems for integrating natural ventilation in office buildings through a comprehensive literature review. *Energy & Buildings*, 127, 1008–1018. <https://doi.org/10.1016/j.enbuild.2016.06.054>
- Sartori, I., Napolitano, A., & Voss, K. (2012). Net zero energy buildings: A consistent definition framework. *Energy and Buildings*, 48, 220–232. <https://doi.org/10.1016/j.enbuild.2012.01.032>
- Zabalza Bribián, I., Valero Capilla, A., & Aranda Usón, A. (2011). Life cycle assessment of building materials: Comparative analysis of energy and environmental impacts and evaluation of the eco-efficiency improvement potential. *Building and Environment*, 46(5), 1133–1140. <https://doi.org/10.1016/j.buildenv.2010.12.002>
- Zucker, G., Judex, F., Blöchle, M., Köstl, M., Widl, E., Hauer, S., ... Zeilinger, J. (2016). A new method for optimizing operation of large neighborhoods of buildings using thermal simulation. *Energy and Buildings*, 125, 153–160. <https://doi.org/10.1016/j.enbuild.2016.04.081>

ISSN: 1657-0308 (Impresa)  
E ISSN: 2357-626X (En línea)

22

Vol.

Nro. 1 REVISTA DE ARQUITECTURA

Arquitecto



UNIVERSIDAD CATÓLICA  
de Colombia  
Vigilada Mineducación

- Revista de Arquitectura (Bogotá)
- Vol. 22 Nro. 1 2020 enero-junio
- pp. 1-188 • ISSN: 1657-0308 • E-ISSN: 2357-626X
- Bogotá, Colombia

## A Orientación editorial

### Enfoque y alcance

La *Revista de Arquitectura (Bogotá)* (ISSN 1657-0308 Impresa y E-ISSN 2357-626X en línea) es una publicación científica seriada de acceso abierto, arbitrada mediante revisión por pares (doble ciego) e indexada, en donde se publican resultados de investigación originales e inéditos.

Está dirigida a la comunidad académica y profesional de las áreas afines a la disciplina. Es editada por la Facultad de Diseño y el Centro de Investigaciones (CIFAR) de la Universidad Católica de Colombia en Bogotá (Colombia).

La principal área científica a la que se adscribe la *Revista de Arquitectura (Bogotá)* según la OCDE es:

Gran área: 6. Humanidades

Área: 6.D. Arte

Disciplina: 6D07. Arquitectura y Urbanismo

También se publican artículos de las disciplinas como 2A02, Ingeniería arquitectónica; 5G03, Estudios urbanos (planificación y desarrollo); 6D07, Diseño.

Los objetivos de la *Revista de Arquitectura (Bogotá)* son:

- Promover la divulgación y difusión del conocimiento generado a nivel local, nacional e internacional
- Conformar un espacio para la construcción de comunidades académicas y la discusión en torno a las secciones definidas.
- Fomentar la diversidad institucional y geográfica de los autores que participan en la publicación.
- Potenciar la discusión de experiencias e intercambios científicos entre investigadores y profesionales.
- Contribuir a la visión integral de la arquitectura, por medio de la concurrencia y articulación de las secciones mediante la publicación de artículos de calidad.
- Publicar artículos originales e inéditos que han pasado por revisión de pares, para asegurar que se cumplen las normas éticas, de calidad, validez científica, editorial e investigativa.
- Fomentar la divulgación de las investigaciones y actividades desarrolladas en la Universidad Católica de Colombia.

Palabras clave de la *Revista de Arquitectura (Bogotá)*: arquitectura, diseño, educación arquitectónica, proyecto y construcción, urbanismo.

Idiomas de publicación: español, inglés, portugués y francés.

**Título abreviado:** Rev. Arq.

**Título corto:** RevArq

### Políticas de sección

La revista se estructura en tres secciones correspondientes a las líneas de investigación activas y aprobadas por la institución, y dos complementarias, que presentan dinámicas propias de la Facultad de Diseño y las publicaciones relacionadas con la disciplina.

**Cultura y espacio urbano.** En esta sección se publican los artículos que se refieren a fenómenos sociales en relación con el espacio urbano, atendiendo aspectos de la historia, el patrimonio cultural y físico, y la estructura formal de las ciudades y el territorio.

**Proyecto arquitectónico y urbano.** En esta sección se presentan artículos sobre el concepto de proyecto, entendido como elemento que define y orienta las condiciones proyectuales que devienen en los hechos arquitectónicos o urbanos, y la forma como estos se convierten en un proceso de investigación y nuevo de conocimiento. También se presentan proyectos que sean resultados de investigación, los cuales se validan por medio de la ejecución y transformación en obra construida del proceso investigativo. También se contempla la publicación de investigaciones relacionadas con la pedagogía y didáctica de la arquitectura, el urbanismo y el diseño.

**Tecnología, medioambiente y sostenibilidad.** En esta sección se presentan artículos acerca de sistemas estructurales, materiales y procesos constructivos, medioambiente y gestión, relacionados con los entornos social-cultural, ecológico y económico.

**Desde la Facultad.** En esta sección se publican artículos generados en la Facultad de Diseño, relacionados con las actividades de docencia, extensión, formación en investigación o internacionalización, las cuales son reflejo de la dinámica y de las actividades realizadas por docentes, estudiantes y egresados; esta sección no puede superar el 20% del contenido.

**Textos.** En esta sección se publican reseñas, traducciones y memorias de eventos relacionados con las publicaciones en Arquitectura y Urbanismo.

Portada: Sede de la Unesco en París, vista desde la Avenue de Ségur. Visitantes ingresando al Espace de méditation (estructura cilíndrica en concreto realizada por Tadao Ando)

Fotografía: © Andrés Ávila (2018, agosto)



## A Frecuencia de publicación

Desde 1999 y hasta el 2015, la *Revista de Arquitectura (Bogotá)* publicó un volumen al año, a partir del 2016 se publicarán dos números por año en periodo anticipado, enero-junio y julio-diciembre, pero también maneja la publicación anticipada en línea de los artículos aceptados (versión Post-print del autor).

La *Revista de Arquitectura (Bogotá)* se divulga mediante versiones digitales (PDF, HTML, EPUB, XML) e impresas con un tiraje de 700 ejemplares, los tiempos de

producción de estas versiones dependerán de los cronogramas establecidos por la editorial.

Los tiempos de recepción-revisión-aceptación pueden tardar entre seis y doce meses dependiendo del flujo editorial de cada sección y del proceso de revisión y edición adelantado.

Con el usuario y contraseña asignados, los autores pueden ingresar a la plataforma de gestión editorial y verificar el estado de revisión, edición o publicación del artículo.

## A Canje

La *Revista de Arquitectura (Bogotá)* está interesada en establecer canje con publicaciones académicas, profesionales o científicas del área de Arquitectura y Urbanismo, como medio de reconocimiento y discusión de la producción científica en el campo de acción de la publicación.

### Mecanismo

Para establecer canje por favor descargar, diligenciar y enviar el formato: RevArq FP20 Canjes

Universidad Católica de Colombia  
(2020, enero-junio). *Revista de Arquitectura (Bogotá)*, 22(1), 1-188. Doi: 10.14718

ISSN: 1657-0308  
E-ISSN: 2357-626X

Especificaciones:  
Formato: 34 x 24 cm  
Papel: Mate 115 g  
Tintas: Negro y policromía

## A Contacto

Dirección postal:  
Avenida Caracas No. 46-72.  
Universidad Católica de Colombia  
Bogotá D.C.(Colombia)  
Código postal: 111311

Facultad de Diseño  
Centro de Investigaciones (CIFAR).  
Sede El Claustro. Bloque "L", 4 piso  
Diag. 46A No. 15b-10  
Editor, Arq. César Eligio-Triana

Teléfonos:  
+57 (1) 327 73 00 – 327 73 33  
Ext. 3109; 3112 o 5146  
Fax: +57 (1) 285 88 95

Correo electrónico:  
revistadearquitectura@ucatolica.edu.co  
cifar@ucatolica.edu.co

Página WEB:  
www.ucatolica.edu.co  
vínculo Revistas científicas  
<http://publicaciones.ucatolica.edu.co/revistas-cientificas>  
[http://editorial.ucatolica.edu.co/ojsucatolica/revistas\\_ucatolica/index.php/RevArq](http://editorial.ucatolica.edu.co/ojsucatolica/revistas_ucatolica/index.php/RevArq)



- PÁG. 3** ● Producción, consumo de información e impacto de la *Revista de Arquitectura (Bogotá)*. Análisis bibliométrico 2016-2019  
Production, consumption of information and impact in the *Revista de Arquitectura (Bogotá)*. Bibliometric Analysis  
César Eligio-Triana
- PÁG. 18** ● ¿Equidad en la dotación de espacio público en Bogotá?  
Public Space endowment equity in Bogotá?  
Julián Alberto Gutiérrez-López, Lina Fernanda Quenguan-López, Mario Andrés Betancourt-Carvajal
- PÁG. 30** ● Caracterización de las tramas urbanas de la ciudad de Manizales, Colombia (1849-2017)  
Characterization of urban morphology of the city of Manizales, Colombia (1849-2017)  
Tania Giraldo-Ospina, Luis-Ricardo Vásquez-Varela
- PÁG. 44** ● Comprensión del territorio para la construcción de apropiación e identidad en el municipio de Soacha  
Understanding the territory for the construction of appropriation and identity in the Municipality of Soacha  
Andrea Bibiana Reyes-Guarnizo
- PÁG. 58** ● El color como componente paisajístico en los catálogos de paisaje urbano  
Color as a landscape component in townscape catalogues  
Lucas Peries, María Cecilia Kesman, Silvana de Lourdes Barraud
- PÁG. 67** ● El capital de la movilidad urbana cotidiana: motilidad en la periferia de Lima Metropolitana  
The capital of everyday urban mobility: Motility on the periphery of Metropolitan Lima  
Gerardo D. Regalado-Regalado
- PÁG. 82** ● Experiencias y retos del uso de datos de aplicaciones móviles para la movilidad urbana  
Experiences and challenges of using mobile application data for urban mobility  
Anna-Beatriz Sabino, Pedro Reis-Martins, Mauricio Carranza-Infante
- PÁG. 94** ● De componer la fachada a diseñar la envolvente. El ejemplo del arquitecto Juvenal Moya en Cali  
To compose the facade to design the envelope. The example of the architect Juvenal Moya in Cali  
Jorge Galindo-Díaz, Iván Osuna-Motta, Andrea Marulanda-Montes
- PÁG. 107** ● El dibujo manual y digital como generador de ideas en el proyecto arquitectónico contemporáneo  
Manual and digital drawing as generator of ideas in the contemporary architectural project  
Javier Alonso Bohórquez-Rueda, Magda Paola Montañez-Moreno, Wilmer Leonardo Sánchez-Ávila
- PÁG. 118** ● Dos bienales, dos hemisferios, dos tendencias. Las Bienales de Venecia como pretexto para una reflexión  
Two biennials, two hemispheres, two trends. The Biennials of Venice as a pretext for reflection  
Alessandro Masoni
- PÁG. 130** ● Diseño y artesanado: una mirada contemporánea  
Design and craftsmanship: a contemporary view  
Pedro Arturo Martínez-Osorio, Luis Carlos Paschoarelli, Paula Da-Cruz-Landim
- PÁG. 138** ● Análisis comparativo de aspectos térmicos y resistencias mecánicas de los materiales y los elementos de la construcción con tierra  
Comparative analysis of thermal aspects and mechanical resistance of building materials and elements with earth  
María Guadalupe Cuitiño-Rosales, Rodolfo Rotondaro, Alfredo Esteves
- PÁG. 152** ● Evaluación del desempeño térmico del sillar (ignimbrita) de Arequipa, Perú  
Evaluation of the ashlar (ignimbrite) thermal performance of Arequipa, Peru  
Luis Carlos Herrera-Sosa, Édgar Elías Villena-Montalvo, Karin Rosario Rodríguez-Neira
- PÁG. 164** ● Desempeño térmico de cerramientos de tierra alivianada. Posibilidades de aplicación en el territorio peruano  
Thermal performance of cob enclosures. Possibilities of its application in the Peruvian territory  
Martin Wieser, Silvia Onnis, Giuseppina Meli
- PÁG. 175** ● Análisis de redes para la transferencia de tecnologías sostenibles entre firmas de construcción internacional  
Network Analysis of Green Technology Transfer between International Construction Firms  
Rolando-Arturo Cubillos-González



CONTEXTOS  
CONTEXTS



CULTURA Y ESPACIO URBANO  
CULTURE AND URBAN SPACE



PROYECTO ARQUITECTÓNICO Y URBANO  
ARCHITECTURAL AND URBAN PROJECT



TECNOLOGÍA, MEDIOAMBIENTE Y SOSTENIBILIDAD  
TECHNOLOGY, ENVIRONMENT AND SUSTAINABILITY



La Revista de Arquitectura es de acceso abierto, arbitrada e indexada y está presente en:



Revista de Arquitectura (Bogotá) Universidad Católica de Colombia



@REVARQUCATORICA



<https://www.mendeley.com/profiles/revista-de-arquitectura-bogot/>

